



NATIONAL CLEARING COMPANY
OF PAKISTAN LIMITED

USER GUIDE

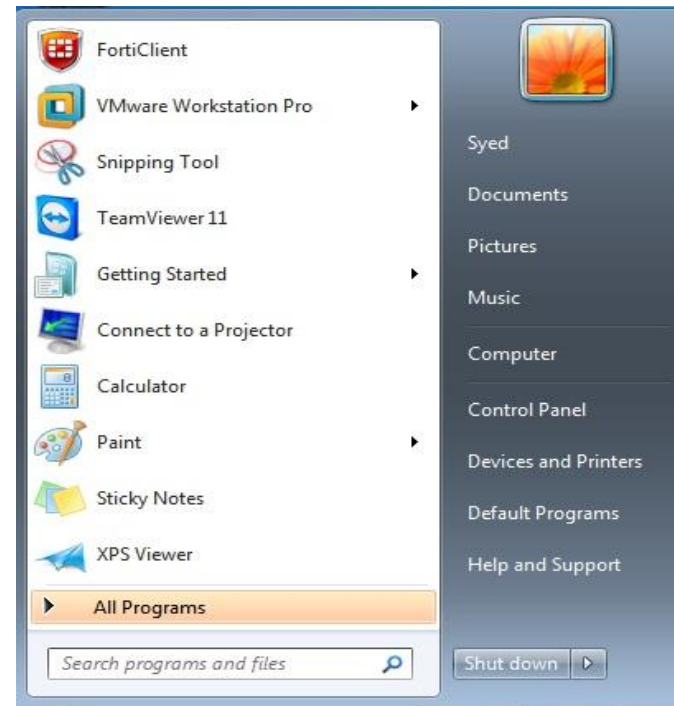
*How to Connect
Using FORTITOKEN*

Step 1. Procedure:

- I. Locate Forti-Client Icon on desktop.
 - Open it by double clicking on the icon.
 - Right click and select open option.



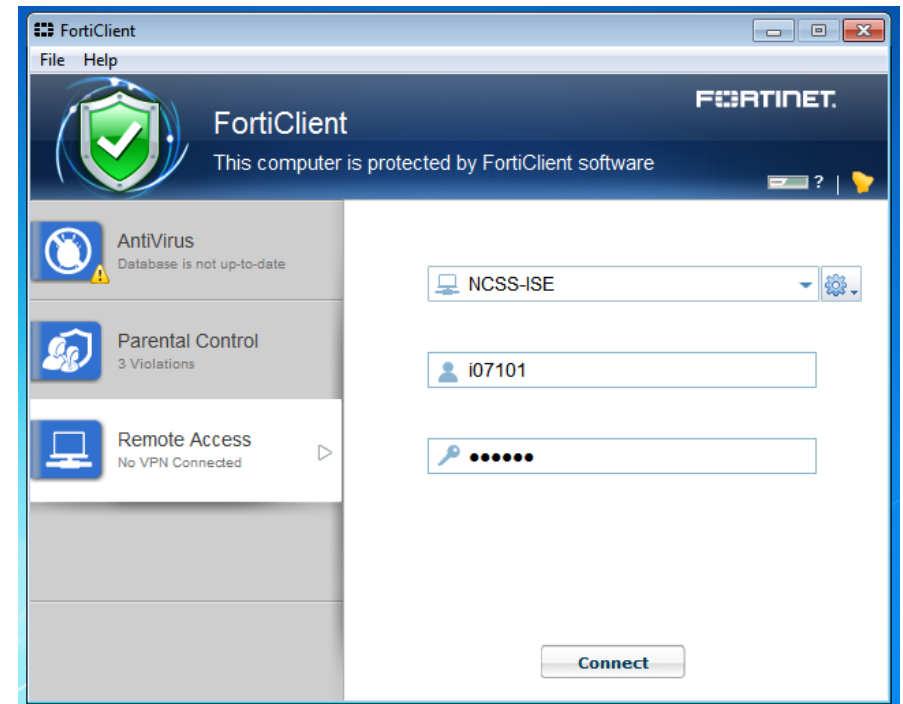
- II. Locate Forti-Client in program option.
 - Click on **Start** button, go to **All Program** option.
 - Then Click on the **forti-Client**.



Step 2. After double clicking on the Forti client icon main Interface is shown below:



Step 3. Select the **Remote Access Option** and **Enter username & password.**



Step 4. Once you have entered the username and password, Generate a unique code through your Forti Token device:
(Remember that the token code will refresh after every 60 sec)



Step 5. Now enter the Forti Token code in circled Tab as shown below
And click ok button.



Step 6. After entering the unique code you will connect to VPN as status is shown below.



Step7. After Connecting VPN now you may proceed to the normal Daily tasks.

Step8. In Case of Dis connectivity **Repeat** from **Step 1**

**Further Queries Contact
NCCPL Customer Support Services**

**Contact: (92-21) 111-111-622
Email: info@nccpl.com.pk**

**For your feedback visit
<http://www.nccpl.com.pk/feedback>**